

**MARKETING** is probably the single most important aspect of effective property management. Done improperly advertising can be expensive and unproductive, leading to prolonged vacancies and considerable opportunity costs.

There is no universal strategy to advertising as renters are as diverse as real estate. Anyone can post on Craigslist, but we know where niches exist for specific property types in order to find the greatest number of prospective residents in the least expensive manner. An advertisement can be lost online among thousands without our system of continuous postings in different and eye-catching formats so that your property remains near the top of the queues at all times.

Below are some examples of the advertising methods we utilize. Not all sources are applicable to all property types.



- Yard Signs
- Banners
- Mail Fliers
- Posted Fliers
- OHSU Housing
- Community Colleges
- Major Employers in the Area
- **Corporate Rental Companies**
- Portland State University Housing
- ...and more

## Price. What is the maximum rent your property can achieve?

Pricing a rental property is not an exact science, but it is close. The rental market holds quantifiable information that will determine the appropriate price to begin advertising. Do not just take someone's word for what your property is worth, let us show you.

Before listing your property we provide a recommended price along with a comparable property report similar to those shown below. During the leasing process we re-evaluate the market every week and provide you with updated reports as necessary.

Subject Property: 1025 NW Couch St., Portland, 97209 (The Henry)  
updated 9/2/2010

Bd / Ba	Rent	Sq Feet	Rent/Ft	Property	Furnished?
1 / 1.5	\$2,100	1,025	\$2.05	Henry	Partial
1 / 1.5	\$1,850	1,025	\$1.80	Henry	No
1 / 1.0	\$1,750	1,050	\$1.67	Elizabeth	No
1 / 1.0	\$1,699	1,006	\$1.69	Elizabeth	No
1 / 1.0	\$1,600	700	\$2.29	Civic	No
1 / 1.0	\$1,295	820	\$1.58	Pinnacle	No
1 / 1.0	\$1,550	650	\$2.38	Royal Arm	Yes
2 / 2.0	\$2,050	1,160	\$1.77	Elizabeth	No
2 / 2.0	\$2,100	1,200	\$1.75	Pinnacle	No
2 / 2.0	\$2,195	1,350	\$1.63	Marshall	No
2 / 2.0	\$2,250	1,225	\$1.84	Bridgeport	No
2 / 2.0	\$1,999	1,326	\$1.51	Meriwether	No
<b>\$1,870</b>		<b>1,045</b>	<b>\$1.79</b>		

Subject 1 / 1.0 **\$1,895** 1,075 **\$1.76**

Subject Property: NW Emerald Canyon Drive., Beaverton, OR 97006  
updated 8/19/2010

Bd / Ba	Rent	Sq Feet	Rent/Ft	Distance
4 / 3	\$1,875	2,420	\$0.77	1.3 mi
4 / 2.5	\$1,700	2,058	\$0.83	0.5 mi
5 / 2.5	\$1,795	2,038	\$0.88	0.3 mi
4 / 3	\$1,875	2,281	\$0.82	??
4 / 2.5	\$1,400	1,770	\$0.79	4 Blocks
4 / 2.5	\$1,800	2,100	\$0.86	0.5 mi
5 / 2.5	\$1,795	2,060	\$0.87	0.5 mi
5 / 3	\$1,895	2,428	\$0.78	0.5 mi
<b>\$1,767</b>		<b>2,144</b>	<b>\$0.82</b>	

Subject 1 2/3 **\$1,995** 3,340 **\$0.60**

Dave Biglen | Greenbridge Properties | (503) 617-6414

## 111 SW Harrison St, Portland, OR

Beautifully furnished condo in the Harrison Tower with a park view and walking distance to PSU. Streetcar stops at your doorstep.

### Furnished 1BR/1BA Condo

**\$1,575/month**

Bedrooms	1
Bathrooms	1 full, 0 partial
Sq Footage	712
Parking	1 dedicated
Pet Policy	No pets
Deposit	\$1,575



see additional photos below

### DESCRIPTION

Major renovation in 2007. Great location on the Portland Streetcar line which links you to the South Waterfront, PSU, Downtown and the Pearl. Portland State is within easy walking distance. Beautiful espresso wood flooring, espresso colored cabinets, granite counters and stainless steel appliances. Both short term and long term leases will be considered.

### RENTAL FEATURES

- Air conditioning
- Living room
- Refrigerator
- Granite countertop
- Balcony, Deck, or Patio
- Central heat
- Dining room
- Stove/Oven
- Stainless steel appliances
- Hardwood floor
- Dishwasher
- Microwave
- Laundry area - inside

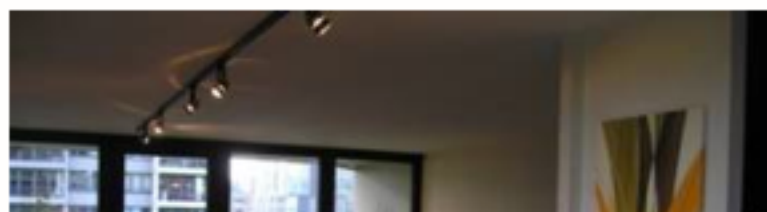
### COMMUNITY FEATURES

- Garage parking
- Elevator
- Laundry on-site
- Secured entry

### LEASE TERMS

\$30 application fee. Resident only responsible for electricity and cable. Rent includes parking space, free laundry, water, sewer and trash.

### ADDITIONAL PHOTOS



Greenbridge Properties | [Email Us](#) | (503) 617-6414

# 111 SW Harrison St, Portland, Oregon 97201

Beautifully furnished condo on the 9th floor. Streetcar stops at doorstep.

**\$1,575**

<b>Bedrooms</b>	1
<b>Bathrooms</b>	1.0
<b>Sq. Footage</b>	715, Available Now
<b>Parking</b>	Designated spot in underground garage
<b>Pet Policy:</b>	Not Allowed
<b>Deposit:</b>	Refundable equal to first month rent



[Click for a map](#)

## Description

Move-In NOW!

Within 2 blocks of the waterfront and Portland State University. The Portland Streetcar is steps away from the lobby doors and connects you to the entire Portland Metro area. Great view over the park.

Fully furnished condo with beautiful furniture, espresso wood flooring, espresso colored cabinets, granite countertops and stainless steel appliances. All kitchen-ware provided.

FREE assigned parking space in garage. Water, sewer and trash included in rent. Washer and Dryer located on site.

No Pets and No Smokers please.

## Rental Features

- Hardwood Floor
- Stainless steel appliances
- Living room
- Tile Floor
- Balcony, Deck, or Patio
- On-site Laundry
- Air conditioning
- Cable-ready

## Community Features

- Garage Parking
- Views
- Secured Entry
- Sauna/Spa
- Elevator
- Swimming Pool(s)

## Lease Terms

97209 Search

Rentals Apartments Vacation Rentals Find a Property Manager

Portland Rentals - Homes for Rent in Portland, Apartments, Rental Homes in Portland, OR, Houses for Rent and Other Rental Houses in Portland, Oregon

Home » Oregon » Portland » Beautifully Furnished Harrison East condo w View My Account

**Check Availability:**

\* Your Name:

\* Email Address:

Phone Number:

Move-in Date:

Message:

Send

**Beautifully Furnished Harrison East condo w/ View**

111 SW Harrison St  
Portland, OR 97204

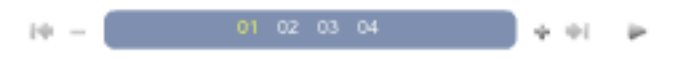
Greenbridge Properties

Call: (866) 415-7601

Check Your Credit

[Print this Property](#)  
[Share](#)

Property URL:  
<http://1059770.rentals.com>



**Pricing & Details**

Within 2 blocks of the waterfront and Portland State University. The Portland Streetcar is steps away from the lobby doors and connects you to the entire Portland Metro area. Great view over the park. Fully furnished condo with beautiful furniture, espresso wood flooring, espresso colored cabinets, granite countertops and stainless steel appliances. All kitchen-ware provided. Free assigned parking space in garage. Water, sewer and trash included in rent. Washer and Dryer located on site. No Pets and No Smokers please. \$30 application fee. Refundable security deposit equal to first months rent required on move-in.

**Floor Plan**  
1 Bedrooms  
1 Bathrooms  
715 Square Feet

**Pricing**  
\$1,650 per Month  
\$1,650 Deposit  
\$30 Application Fee



**Availability**  
Available Immediately

**Lease Terms**  
Month To Month  
Nine Months  
One Year  
Six Months

**Special Features**  
Smoking Policy: Smoking Not Allowed  
Cats Not Allowed  
Dogs Not Allowed

**Utilities Included**  
Garbage  
Gas  
Sewer  
Water

[Check Availability](#) Call: (866) 415-7601

 **Online masters and PhD programs for busy professional lives.** [LEARN MORE](#) 

**Amenities**

**Interior Features**  
Air Conditioning  
Cable Available  
Furnished  
Scenic View  
Blinds  
Refrigerator  
DishWasher

**Kitchen Features**  
BreakfastNook  
DishWasher  
Disposal  
Microwave  
Pantry  
Refrigerator  
Stove

**Rooms**  
Dining Room  
Living Room

# Furnished Condo for Rent

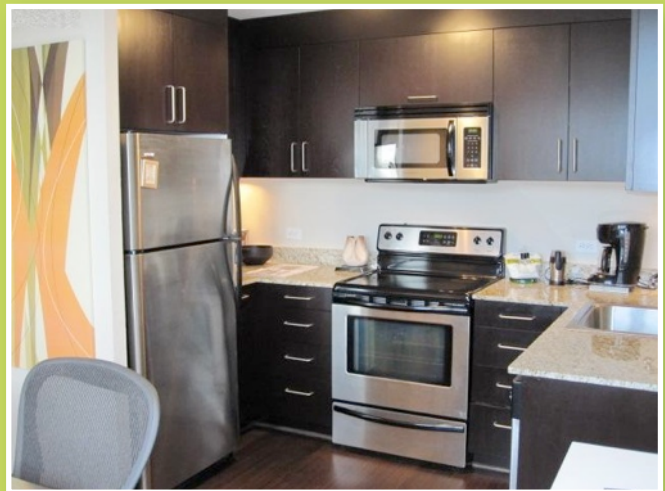
## 1 BR/1 BA \$1575 / Mo

### 111 SW Harrison St, Portland

Beautifully furnished condo in the East Harrison Tower. Ninth floor facing PSU with a view of the park. Easy walking distance to campus, waterfront and Streetcar stops at your doorstep!

Major Renovation in 2007. Beautiful espresso wood flooring, espresso colored cabinets, Granite countertops and Stainless Steel appliances. Both short and long leases offered!

- Air Conditioning
- Living Room
- Refrigerator
- Granite Countertop
- Balcony
- Central Heat
- Dining Room
- Stainless Steel Appliances
- Hardwood Floors
- Free Laundry On-site
- All Kitchenware
- Garage Parking
- Secured Entry
- GREAT VIEW



(503) 617-6414

[www.gb-rent.com](http://www.gb-rent.com)

**CONDO FOR RENT**  
503-617-6414  
[www.gb-rent.com](http://www.gb-rent.com)

**CONDO FOR RENT**  
503-617-6414  
[www.gb-rent.com](http://www.gb-rent.com)

**CONDO FOR RENT**  
503-617-6414  
[www.gb-rent.com](http://www.gb-rent.com)

**CONDO FOR RENT**  
503-617-6414  
[www.gb-rent.com](http://www.gb-rent.com)

**CONDO FOR RENT**  
503-617-6414  
[www.gb-rent.com](http://www.gb-rent.com)

**CONDO FOR RENT**  
503-617-6414  
[www.gb-rent.com](http://www.gb-rent.com)

**CONDO FOR RENT**  
503-617-6414  
[www.gb-rent.com](http://www.gb-rent.com)

**CONDO FOR RENT**  
503-617-6414  
[www.gb-rent.com](http://www.gb-rent.com)

**CONDO FOR RENT**  
503-617-6414  
[www.gb-rent.com](http://www.gb-rent.com)

**CONDO FOR RENT**  
503-617-6414  
[www.gb-rent.com](http://www.gb-rent.com)